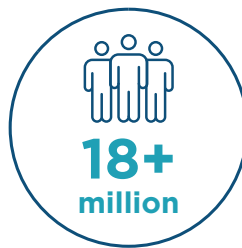


GA is an advanced form of dry age-related macular degeneration (AMD) that can cause irreversible vision loss.¹

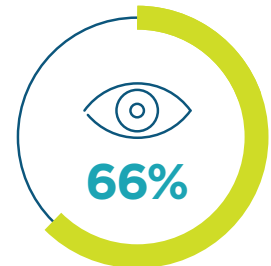
What is the global impact of GA?



people globally
are **currently**
affected by GA¹



cases of late AMD (including
GA) expected globally
by 2040, with an **aging**
population being a key
contributing factor²



of eyes with GA may
become **blind or severely**
visually impaired³

Who can be affected?

These risk factors increase the likelihood of GA, but it can occur in any patient⁴:



Age \geq 55 years



Caucasian descent



Active smoker

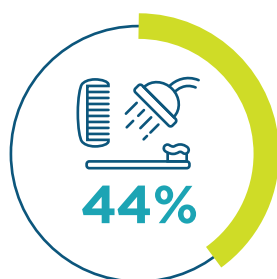


Hypertension/CVD



High-fat diet

What impact can GA have on patients' daily lives?



require assistance
with daily activities⁵

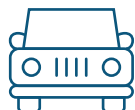


report difficulty
reading⁶



lose confidence
driving at night⁵

How quickly can GA progression occur?



In **1.6 years** after diagnosis, **67% of people** with GA lose their ability to drive⁷

Extrafoveal lesions can progress to foveal involvement in **2.5 years**⁸



CVD=cardiovascular disease.

References: 1. Anegondi N, et al. *Ophthalmology*. 2025;132(4):420-430. 2. Wong WL, Su X, Li X, et al. *Lancet Glob Health*. 2014;2(2):106-116. 3. Colijn JM, Liefers B, Joachim N, et al. *JAMA Ophthalmol*. 2021;139(7):743-750. 4. Heesterbeek TJ, Loes-Motta L, Hoyng CB, Lechanteur YTE, den Hollander AI. *Ophthalmic Physiol Opt*. 2020;40(2):140-170. 5. Patel PJ, Ziemssen F, Ng E, et al. *Clin Ophthalmol*. 2020;14:15-28. 6. Singh RP, Patel SS, Nielsen JS, Schmier JK, Rajput Y. *Am J Ophthalmic Clin Trials*. 2019;2(1):1-6. 7. Chakravarthy U, Bailey CC, Johnston RL, et al. *Ophthalmology*. 2018;125(6):842-849. 8. Lindblad AS, Lloyd, PC, Clemons TE, et al. *Arch Ophthalmol*. 2009;127(9):1168-1174.

© 2025 Astellas Pharma Canada, Inc. All rights reserved.
Astellas, and the flying star logo are trademarks of Astellas Pharma Inc.

MAT-CA-ACP-2025-00035 | December 2025

